



Updated 2023 version
including new case studies



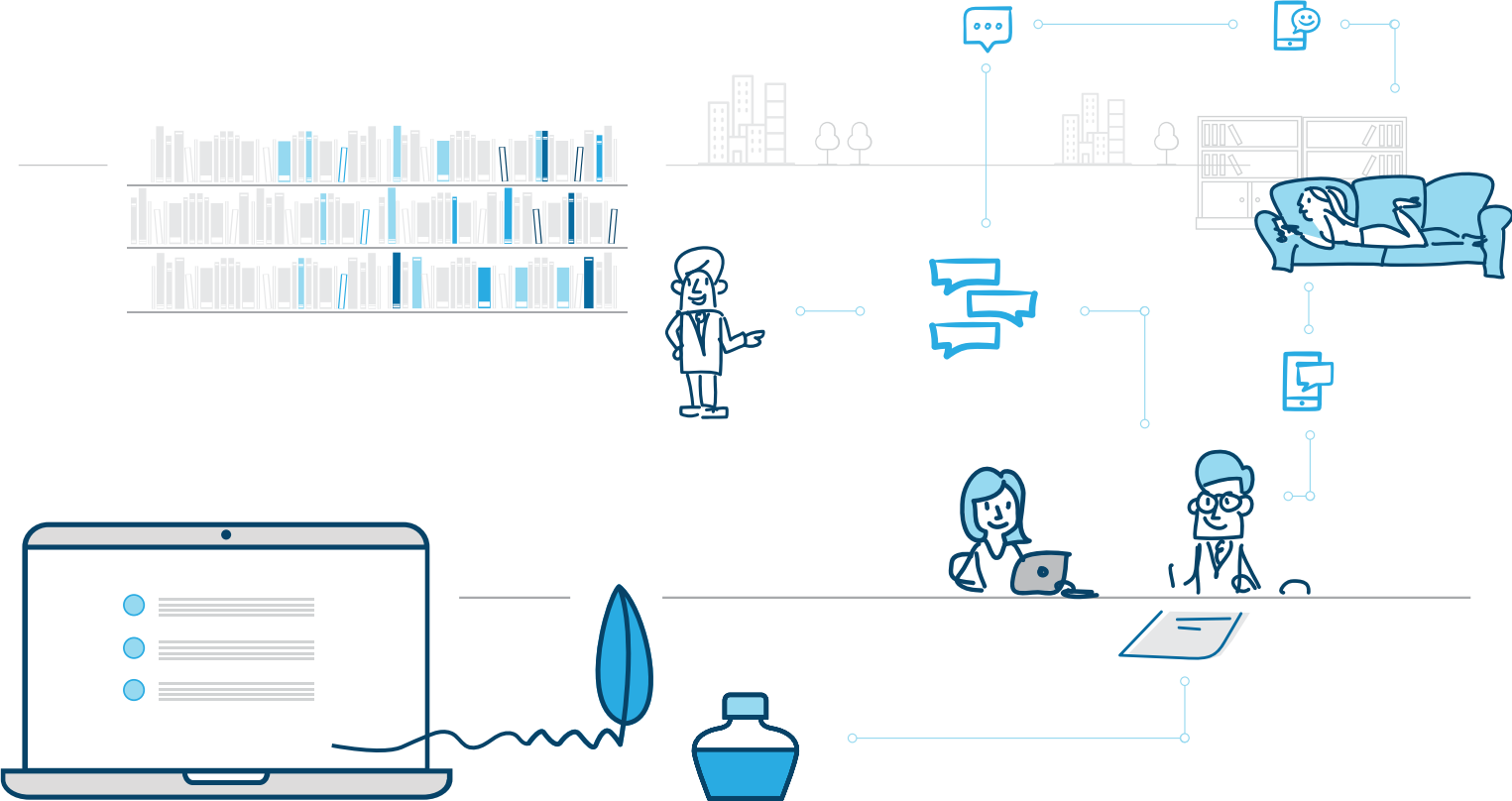
Writing and Publishing simplified.

Better research. Less hassle.



Better research. Less hassle.

Engaged researchers. Instant collaboration.



SciFlow is a writing and publishing tool designed specifically for academic researchers. We have removed everything which frustrates researchers or costs too much time. Formatting is now automated. Reference management is easy. Collaboration is instant and all in one place.

SciFlow is designed to save researchers and students time and hassle, so they can concentrate on producing better work.

Say goodbye to formatting frustration

Confusing comments and messy mark-ups are now a thing of the past



2 Researchers spend **days**

formatting a research paper for publication in a peer-reviewed academic journal.¹ That is 52 hours (or a very long week) per researcher, per year, spent on an annoying waste of time.

Not any more.

¹Source: LeBlanc et al., 2019.

PROBLEMS RESEARCHERS FACE



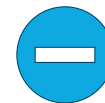
Frustrating Formatting

Formatting articles to journal specs takes time. Lots of time. 14 hours per paper, according to the most recent research. And if she submits the article to another journal, the researcher gets to start all over again.



Complicated Collaboration

We've all been there. Sending a Word file to a colleague, only to waste time looking through old e-mails for the correct version when we realize there is a conflict.



Restrictive Re-use

A complete text, even when published in a journal, is difficult to re-use, distribute, or publish online. Often, the author doesn't even have the final text available.



In five to ten years support for the open scholarly commons will need to consume over half of library expenditures.

David W. Lewis
Dean Emeritus, Purdue
University Library
Indianapolis

New digital library services need better User Experience

Libraries are there to provide information. As the scholarly ecosystem changes, libraries need to evolve too. Therefore libraries are offering expanded digital services for daily activities of researchers and students. As with every new digital service, UX is the key.



THE SCIFLOW MANIFESTO

We believe...

- 1 Research papers must be quickly accessible without transaction costs
- 2 Basic research tools must be available to everyone
- 3 It must be easy to cite and re-use digital content



That is why we built our collaborative software service. Writing and editing take place in the cloud, so researchers wave goodbye to multiple versions of documents with color-coded mark-ups.

And we remove the hours of frustration spent formatting and fiddling with references. SciFlow does all this at the push of a button.

In short, SciFlow helps researchers produce better quality research in less time by removing the hassle.

The new Writing and Publishing solution for Researchers and Libraries

THE SCIFLOW EFFECT

Engaged Researchers & Students

SciFlow was designed specifically to solve the problems research academics encounter when writing and publishing their work. So it's no wonder they enjoy using it. This is demonstrated by the remarkably high level of engagement among our users. SciFlow researchers spend 30 hours a week using the editor. That is more time than office workers spend using e-mail, Slack and WhatsApp combined.

Instant collaboration across all devices

At SciFlow, we believe true open access means removing barriers to successful collaboration, whatever they are. So there will never be any hidden transaction costs. No problems authorizing authors from other institutions. No technological barriers with operating systems. No licensing issues or compatibility problems with older versions. SciFlow is a central platform, accessible on any device with an internet connection. Everything you need, in one place. So you can easily collaborate with others without the hassle of sending different versions via e-mail.

We automate routine tasks

Research papers have very specific requirements. Reference management and formatting to journal specs cost time for little added value. We have automated all of the fiddly formatting and other annoying tasks. And we have integrated the tools researchers need – such as reference and citation managers like Citavi, Endnote, Mendeley and Zotero. SciFlow users don't have to switch between applications. They can concentrate on producing good work.



Text editing toolbar

Add quotes, pictures, tables or equations with buttons, designed especially for academics and scientists.



Browser-based

If you have an internet connection, you can collaborate. And even if your connection breaks down, you can still write your paper. SciFlow will update all the changes as soon as you connect again.



One Platform, unlimited devices

We don't believe in setting limits to academic research. So researchers can access SciFlow from as many devices as they like. No licenses or transaction fees. All you need is an internet connection and an account and you're good to go.



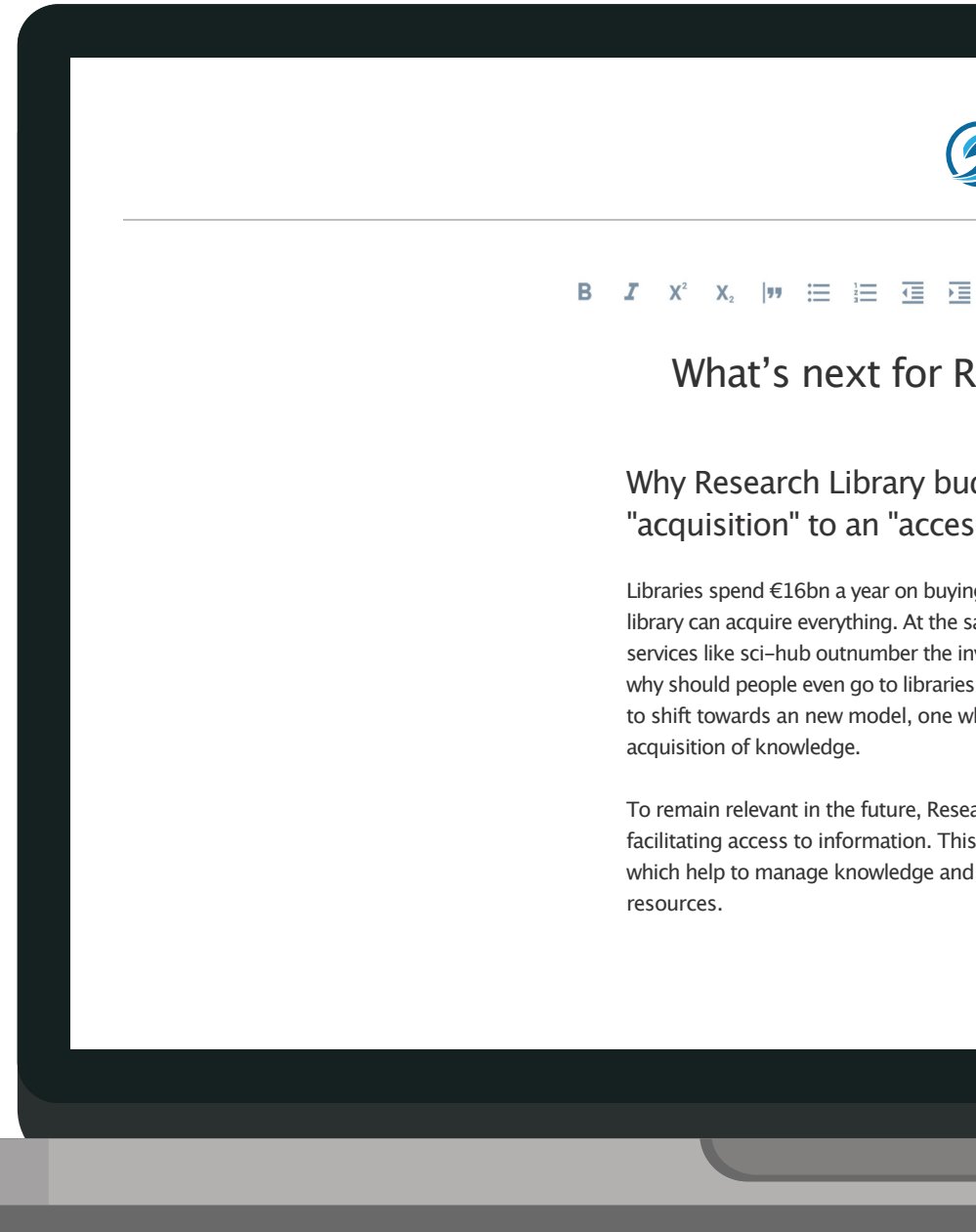
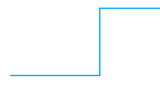
Access to a wide range of templates

We have a wide collection of templates for journal articles, scientific manuscripts and thesis templates, customized for individual publications or universities. Researchers have free access to templates, so they don't have to waste time fiddling with formatting.



Automatic backups

Oops. Forgot to save and lost half a day's work? Admit it. It's happened to you too. It's happened to everyone. Except people who use SciFlow.

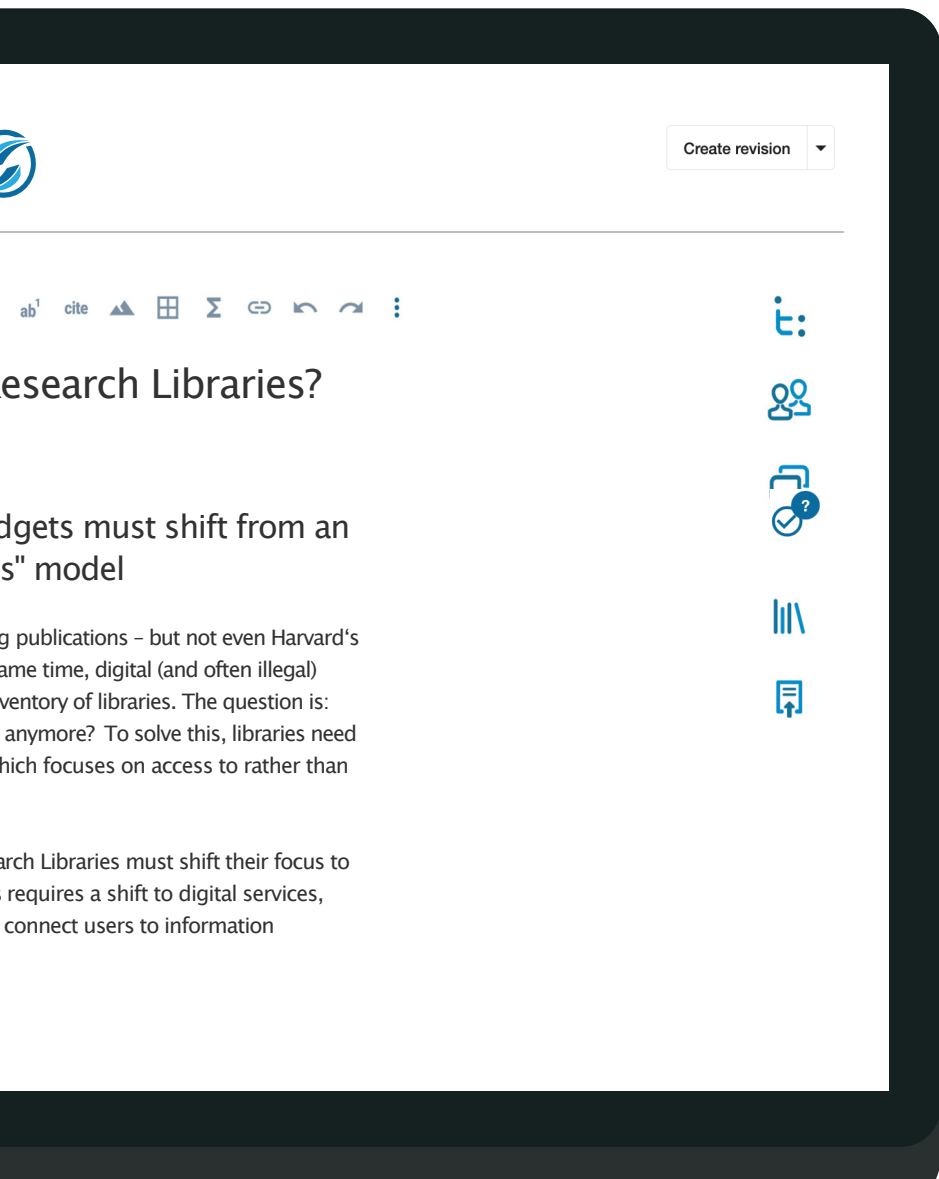


What's next for R

Why Research Library buy "acquisition" to an "access

Libraries spend €16bn a year on buying... library can acquire everything. At the sa... services like sci-hub outnumber the im... why should people even go to libraries... to shift towards a new model, one wh... acquisition of knowledge.

To remain relevant in the future, Resea... facilitating access to information. This... which help to manage knowledge and... resources.



Keep track of who has changed what

Change tracking shows who changed what. Different revisions can be created, compared and restored.



Outline view to easily review long documents

Our easy-to-manage outline view means you can edit your structure without having to scroll up and down and lose your place.



Unlimited users, unlimited documents

Researchers can keep all their work in one place and easily collaborate with colleagues from all institutions and countries.



Comment view to quickly manage comments

SciFlow is specifically designed to allow easy commenting on others' work, and quickly managing the comments by others in your own.



Check spelling & writing style

To ensure that your work shines in form as well as content, the integrated spelling and style checkers support both English and German.



Sophisticated reference management

No more searching if you've added an Endnote instead of a Footnote. Or was it a citation? In SciFlow you can avoid all that hassle and manage references with a click of the button.



Export to a pre-programmed template

Finished writing? One-click and your paper is ready to publish. No time needed to mess about with the formatting.

2 products for authoring and publishing

While we focus on SciFlow Authoring Platform in this brochure, know that we also provide solutions for publishing

SciFlow Authoring Platform

For institutions & universities

- Support your researchers & students with the SciFlow online text editor
- Automated formatting according to thousands of existing journal templates
- Provide users templates for your needs
- Collaboration across institutions and countries
- Premium support for your institution

Get your free institutional trial:



Combine
for optimal
workflows

SciFlow Publish

For publishers & university presses

- Minimize investment costs for publication workflows
- Easy collaboration between author and editor without the hurdle of different formats
- Less time required due to **automatic formatting**
- Standards connect to existing **XML workflows**

More information:



Start writing with one of our thousands of templates

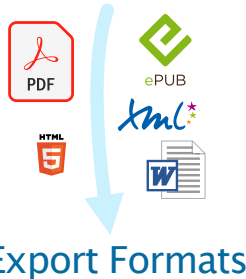


Journal Template Database

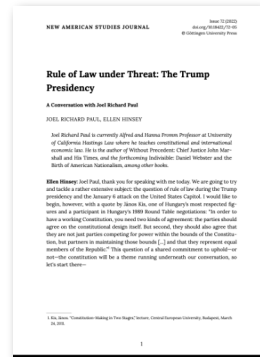
Template	Publisher	Categories	Citation style
Balence			numeric
The Astronomical Journal			author-date
The Astrophysical Journal			author-date
The Astrophysical Journal Letters			author-date
The Astrophysical Journal Supplement Series			author-date
Academic Standard Template			numeric
American Chemical Society (ACS)			numeric



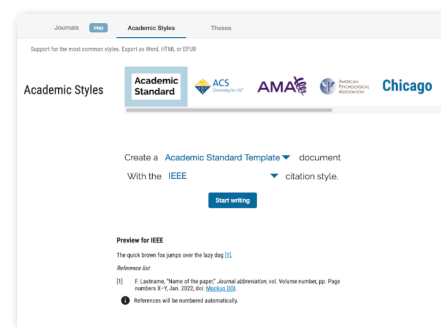
Institutional Templates



Export Formats



Academic Styles



FZJ introduced SciFlow during the start of the pandemic and expanded usage afterwards



Thomas Arndt
Bibliotheksmarketing



DECISION FOR SCIFLOW



Digital services needed as the pandemic started. Decision for SciFlow because:

- Servers in Germany
- GDPR-compliant
- numerous templates
- Export in Word, LaTeX, PDF, HTML & EPUB

ANNOUNCEMENT ON ALL CHANNELS



To let people know about SciFlow and all features, some measures were taken:

- Newsletter to all employees at FZJ
- Announcement on library website
- Launching an IT portal with SciFlow as one of the first software

KNOWLEDGE THROUGH WEBINARS



To increase engagement and motivate writing in SciFlow, multipole events were provided:

- Webinars and webinar recordings at different times and in different languages
- Participation of SciFlow in Open Access week

EXTENDED USAGE



SciFlow is now widely used and growing:

- Usage expanded from academic writing to bureaucratic documents
- License has been renewed by federal IT services for all Helmholtz centers

FULL CASE STUDY HERE:



Writing and Co-authoring Research Articles in SciFlow with an international team



Dr. Tristan Petit
Young Investigator
Group Leader

HZB Helmholtz
Zentrum Berlin

1

Writing collaboratively

- Main author writes first draft
- Comments and corrections from all co-authors in SciFlow
- Multiple reiterations and versions

easy follow-ups and no cluttered e-mail inbox

no license by co-authors needed regardless of their institution

2

Automatic formatting for their Wiley publication

- Export in the right format in Word to submit to Wiley
- Proof check and small adjustments of the formatted paper
- Submit the word file to Wiley

(Re-)Formatting in SciFlow according to journal templates

3

Revision and final formatting

- Write the revision after feedback from reviewers
- Export revised manuscript
- Compare two versions with "Change Tracking"
- Final formatting performed by the Editorial Office

See who changed what and compare different versions with one click

FULL CASE STUDY HERE:



3



ADVANTAGES OF A CAMPUS AGREEMENT



1

ALL THE TEMPLATES YOU NEED

Templates save time. Researchers love our templates, because it means they spend much less time on fiddly formatting and messing around with multiple versions. Journal- or institution-specific templates are one of the ways SciFlow reduces barriers to good research.



2

PREMIUM SUPPORT PACKAGE

We want to empower you to help your researchers and students. There is nothing more frustrating than a minor technical issue stopping you from making progress on and publishing your paper. At SciFlow, we believe the library is more than a place to access information. Libraries facilitate research. In the digital age, that means being able to help researchers use software.

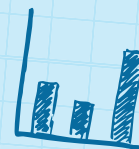


3

DETAILED DATA ANALYTICS

SciFlow helps you gain data-driven insights into how your academics do their research and the typical problems they face. The more data you have, the better you can help them produce better research.

By the way, all the data is of course completely anonymised and on servers in the right country. We've ticked all the boxes, so you don't have to.



SciFlow connects to researchers favorite apps

Built on established standards to enhance existing workflows



Our costumers



More focus, better research

SciFlow is “stickier” than E-mail and other productivity tools.

“Stickiness” is the ultimate measure of a software’s UX. Eyeballs times minutes is one of technology’s main drivers of value. So what does this mean for SciFlow?

For us, the more time spent by users in SciFlow – or “stickiness” – means the more we help our users produce focused research. If they don’t have to switch applications – for example, to receive new comments via e-mail – they can focus on improving their work.

On average, **our users spent 30 hours a week using SciFlow**. To put that into context, studies show that office workers spend 20 hours a week just on e-mail. Add other tools, such as Slack or WhatsApp, and SciFlow is as “sticky” as the world’s leading productivity apps.

We’re proud of that, because our users tell us it’s a contribution to their ability to do focused work and avoid distraction. SciFlow helps them do better research.



Winner of the Catalyst Grant 2020



OpenAccess funding by the BMBF

As easy to roll out as it is to use

SciFlow on your campus

Onboarding

1



Kick-Off

We conduct a call with all Stakeholders

Go Live Portal

We integrate SciFlow into your Library system interface.



Templates

Activation

2



Webinars

We organize webinars for special 'super users' and system administrators.

Then we conduct further webinars covering the basic features of SciFlow, so you are able to get started quickly.



Handbook



Webinars

Training

3



Knowledge Base

We provide a wide range of support and training materials, from a collection of Frequently Asked Questions to detailed video tutorials about specific features.

We also provide a comprehensive SciFlow handbook.



FAQ



Support Forum



Video Tutorials

Personal Support

4



Functional Support

We help you and your users get the most out of SciFlow.

Technical Support

We help you solve any technical issues that might arise.



Chat

Ongoing Development

5



Semiannual Reports

We give you data on your users and help you improve how you use SciFlow.

Roadmap Updates

We are constantly improving SciFlow and will help you use the new features we build into our software.

Get your free institutional trial now



sciflow.net/en/authoring-platform



Contact

carsten.borchert@sciflow.net
+49 (0) 30 233 210 650

Address

SciFlow GmbH
Altensteinstraße 40
14195 Berlin

Website

www.sciflow.net

Managing Director: Dr. Carsten Borchert, Frederik Eichler
Local court: Charlottenburg
Registernummer: HRB 218297 B